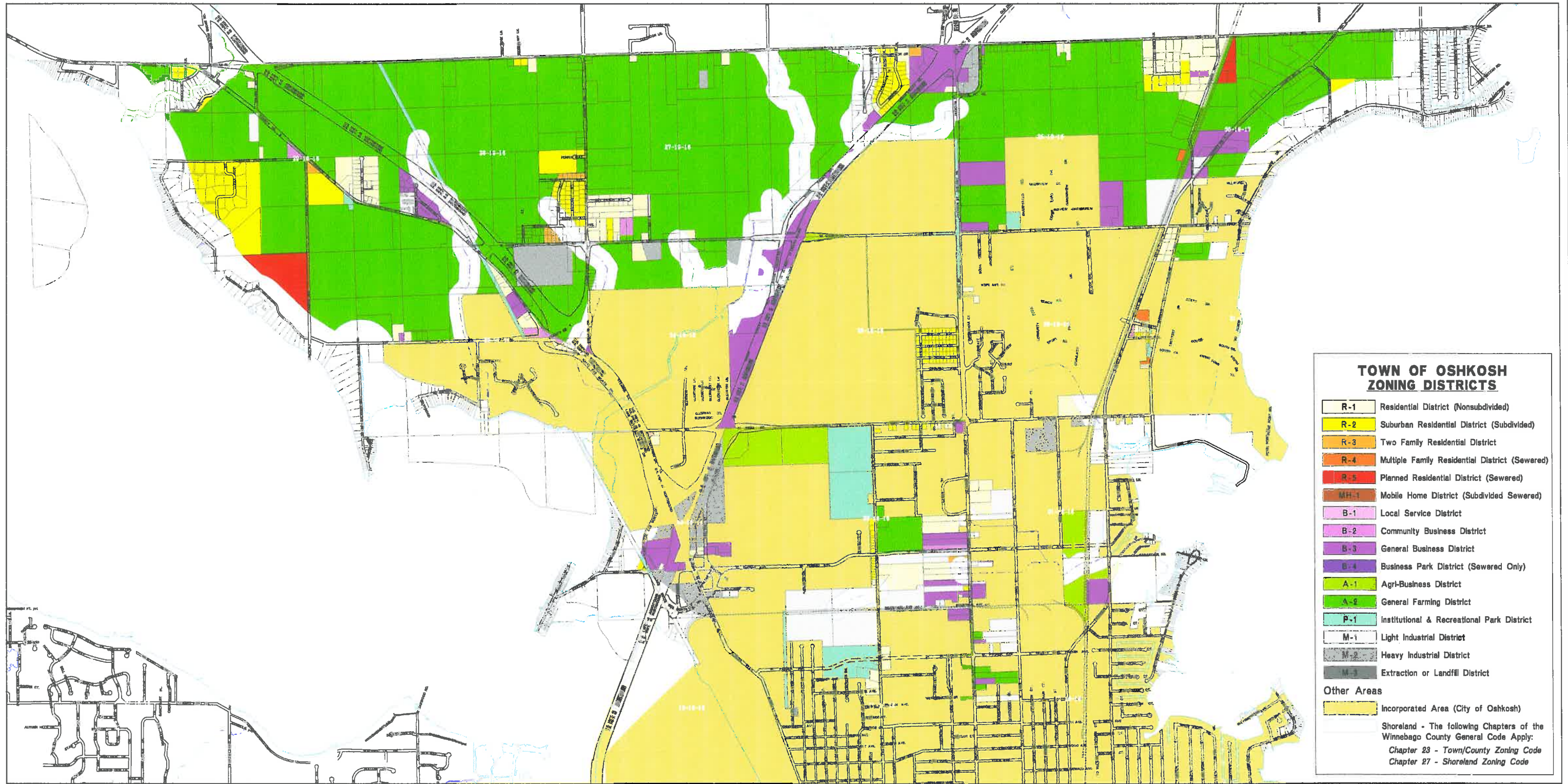
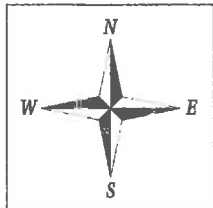


TOWN OF OSHKOSH - TOWN ZONING MAP

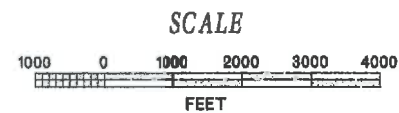


TOWN OF OSHKOSH ZONING DISTRICTS

R-1	Residential District (Nonsubdivided)
R-2	Suburban Residential District (Subdivided)
R-3	Two Family Residential District
R-4	Multiple Family Residential District (Sewered)
R-5	Planned Residential District (Sewered)
MH-1	Mobile Home District (Subdivided Sewered)
B-1	Local Service District
B-2	Community Business District
B-3	General Business District
B-4	Business Park District (Sewered Only)
A-1	Agri-Business District
A-2	General Farming District
P-1	Institutional & Recreational Park District
M-1	Light Industrial District
M-2	Heavy Industrial District
M-3	Extraction or Landfill District
Other Areas	
(Yellow)	Incorporated Area (City of Oshkosh)
Shoreland - The following Chapters of the Winnebago County General Code Apply: Chapter 23 - Town/County Zoning Code Chapter 27 - Shoreland Zoning Code	



Winnebago County
W.I.N.G.S. Project
Produced By:
Diane Culver
Apr 11 2013
The Wave of the Future



Draft: 04-11-13

W.I.N.G.S. PROJECT DISCLAIMER
This data was created for use by the Winnebago County Geographic Information System project. Any other use/application of this information is the responsibility of the user and such use/application is at their own risk. Winnebago County disclaims all liability regarding fitness of the information for any use other than Winnebago County business. Copyright © December 31, 2006 Winnebago County. This map reflects data which is protected by copyright.